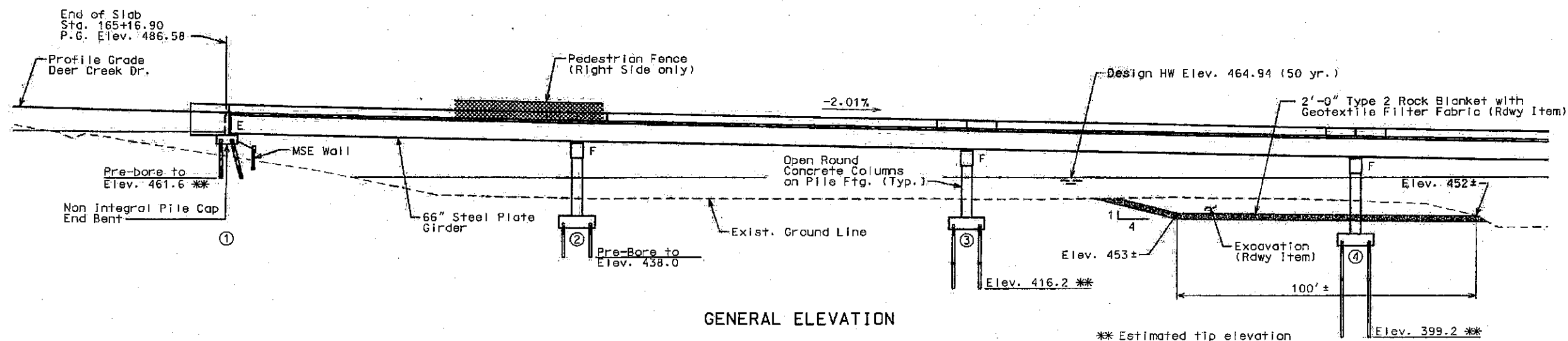
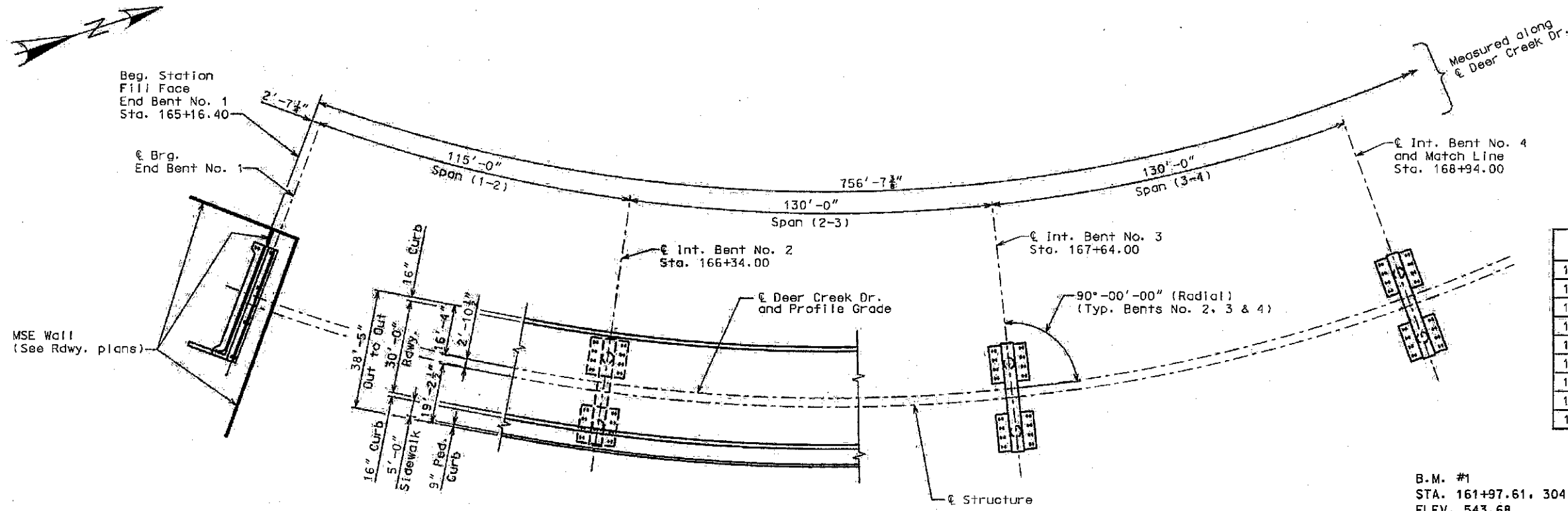


(115'-130'-130'-115') Continuous Composite Plate Girder Spans
 (70'-70'-70'-50') P/S Concrete I-Girder Spans



GENERAL ELEVATION



PLAN

Stationing is along & Deer Creek Drive.
 Dimensions shown in plan view are horizontal.

HYDROLOGIC DATA	
Drainage Area	= 67.2 sq. miles
Design Discharge	= 14,470 cu. ft./sec. (50 years)
Design H.W. Elev.	= 465.09 feet (50 years)
Estimated Backwater	= 0.12 feet
BASIC FLOOD DATA	
Discharge	= 17,070 cu. ft./sec. (100 years)
H.W. Elevation	= 466.01 feet
Estimated Backwater	= 0.11 feet
OVERTOPPING FLOOD DATA	
Discharge	= 23,500 cu. ft./sec. (500 years)

Notice and Disclaimer Regarding Boring Log Data
 For boring data, see soils report.
 The County does not represent or warrant that any such boring data accurately depicts the conditions to be encountered in constructing this project. A contractor assumes all risks it may encounter in basing its bid prices, time or schedule of performance on the boring data depicted in the soils report.

Station	S.E.
165+16.90	-2.70%
165+43.78	-4.00%
169+36.13	-4.00%
169+77.63	-2.00%
171+19.98	-2.00%
171+61.48	0.00%
172+02.98	2.00%
172+44.48	4.00%
172+72.51	4.00%

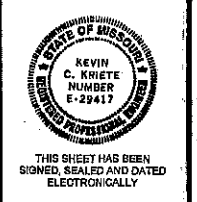
CURVE DATA

PI	= 167+50.64
PC	= 165+07.37
PT	= 169+63.80
Δ	= 49°03'51.7" (LT)
D	= 10°44'58.8"
L	= 456.43'
T	= 243.26'
R	= 533.00'
SE	= 0.040'/'

B.M. #1
 STA. 161+97.61, 304.12' RT
 ELEV. 543.68
 CROSS IN CONCRETE PAVEMENT CENTERLINE
 OPPOSITE CENTERLINE OF COURT-ELIOT COURT,
 THE VILLAGES AT WALDEN POND PLAT FIVE

B.M. #2
 STA. 176+35.01, 0.00'
 ELEV. 472.65
 OLD CROSS IN CONCRETE PAVEMENT AT
 CENTERLINE/CENTERLINE DEER CREEK DRIVE
 & SHADY TIMBER DRIVE

GENERAL ELEVATION
 AND PLAN



DATE PREPARED
 11/21/2014
 SHEET NO.
 1

DESCRIPTION	DATE

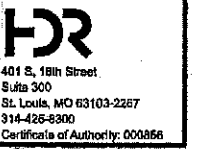
DEER CREEK DRIVE
 EXTENSION

COUNTY PROJECT NUMBER



210 NORTH SECOND STREET
 SUITE 429
 ST. CHARLES, MO 63301
 PHONE (636) 949-7305
 FAX (636) 949-7307

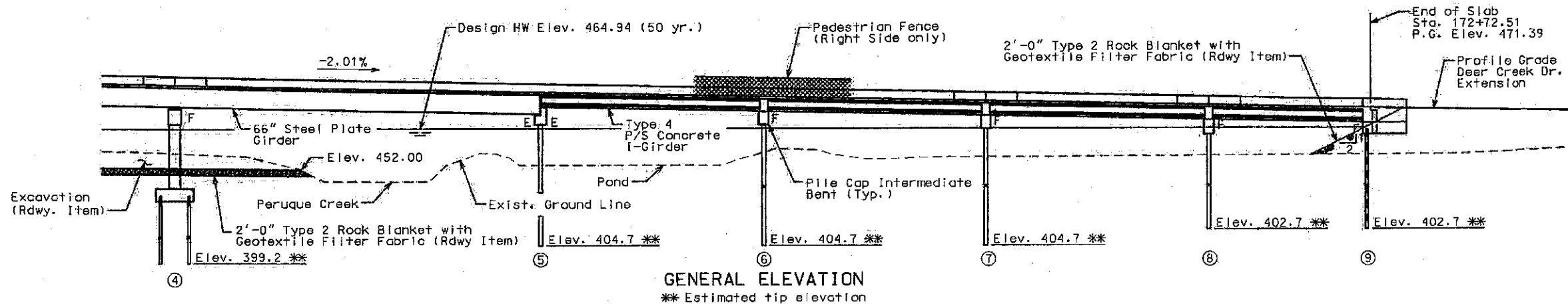
CRAIG TAJKOWSKI
 COUNTY ENGINEER
 HIGHWAY DEPARTMENT



(115'-130'-130'-116') Continuous Composite Plate Girder Spans
 (70'-70'-70'-50') P/S Concrete I-Girder Spans



DATE PREPARED
 11/21/2014
 SHEET NO.
 2



DESCRIPTION
 DATE

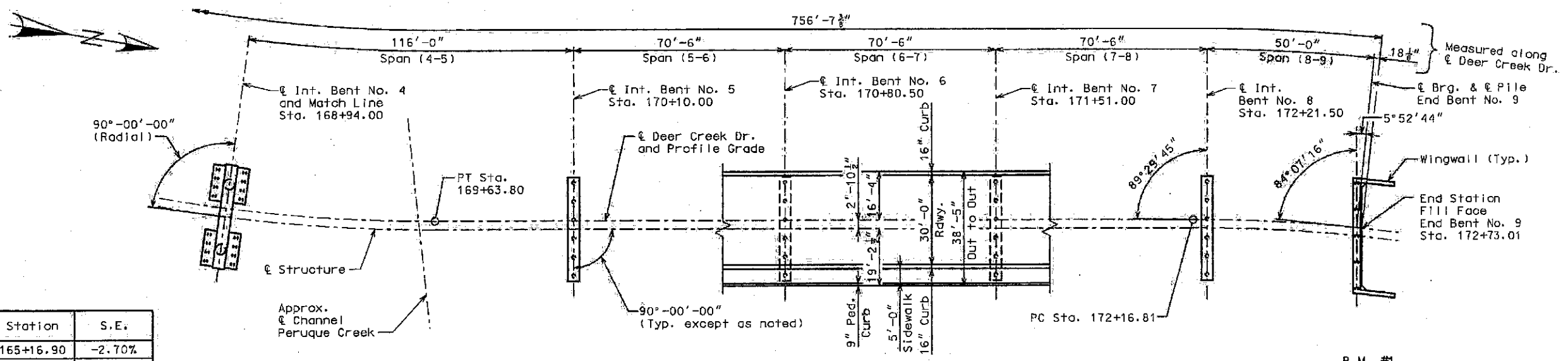
DEER CREEK DRIVE
 EXTENSION

COUNTY PROJECT NUMBER



210 NORTH SECOND STREET
 SUITE 429
 ST. CHARLES, MO 63301
 PHONE (636) 949-1306
 FAX (636) 949-1307

CRAIG TAJKOWSKI
 COUNTY ENGINEER
 HIGHWAY DEPARTMENT



Station	S.E.
165+16.90	-2.70%
165+43.78	-4.00%
169+36.13	-4.00%
169+77.63	-2.00%
171+19.98	-2.00%
171+61.48	0.00%
172+02.98	2.00%
172+44.48	4.00%
172+72.51	4.00%

CURVE DATA
 PI = 167+50.64
 PC = 165+07.37
 PT = 169+63.80
 Δ = 49°03'51.7" (LT)
 D = 10°44'58.8"
 L = 456.43'
 T = 243.26'
 R = 533.00'
 SE = 0.040'/'

CURVE DATA
 PI = 173+55.05
 PC = 172+16.81
 PT = 174+87.32
 Δ = 29°04'42.6" (RT)
 D = 10°44'58.8"
 L = 270.51'
 T = 138.23'
 R = 533.00'
 SE = 0.040'/'

B.M. #1
 STA. 161+97.61, 304.12' RT
 ELEV. 543.68
 CROSS IN CONCRETE PAVEMENT CENTERLINE
 OPPOSITE CENTERLINE OF COURT-ELIOT COURT,
 THE VILLAGES AT WALDEN POND PLAT FIVE

B.M. #2
 STA. 176+35.01, 0.00'
 ELEV. 472.65
 OLD CROSS IN CONCRETE PAVEMENT AT
 CENTERLINE/CENTERLINE DEER CREEK DRIVE
 & SHADY TIMBER DRIVE

Int. Bent No. 8 and End Bent No. 9 are parallel to Int. Bents No. 5 thru 7 and are not radial to the Deer Creek Drive.
 Stationing is along Deer Creek Drive.
 Dimensions shown in plan view are horizontal.

Notice and Disclaimer Regarding Boring Log Data
 For boring data, see soils report.
 The County does not represent or warrant that any such boring data accurately depicts the conditions to be encountered in constructing this project. A contractor assumes all risks it may encounter in basing its bid prices, time or schedule of performance on the boring data depicted in the soils report.